

Xmatrix[®]ELITE



eXACT™ Temperature Control on Every Slide



LIMS Enabled System



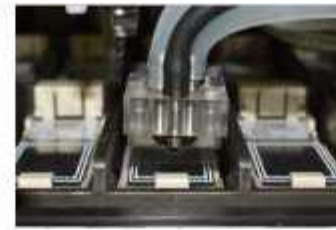
Liquid Level Sensor for Accurate Reagent Dispensing



Barcode Enabled Platform Technology



On-board Dewaxing, Antigen Retrieval and Rehydration



Reaction Micro-chamber with Microfluidics

© 2022 ThermoFisher Scientific, Inc. All rights reserved. Doc. No. 300-0000-01 Rev. 0

Contact Information:

USA: 48810 Kato Road, Suite 200E, Fremont, CA 94538, USA
 India: APIIC SEZ, Adibatla, R.R. Dist. 501510, Telangana, India
 China: Unit 511B, 5F Front Hall, Shanghai Exhibition Center, Shanghai 200041, PRC, China

Customer service - US: customerservice@biogenex.com
 Customer service - India: indiacs@biogenex.com
 Customer service - Global: internationalcs@biogenex.com
 Instrument support: instrument.care@biogenex.com
 Reagent support: reagentsupport@biogenex.com

For US

T: +1-800-421-4149
 F: +1-510-824-1490

For India

T: +91-9100032862
 T: +91-6309448856

For China

T: +86-21-2220-6680
 F: +86-21-2220-6679

For outside US, India, and China

T: +91-7702301043

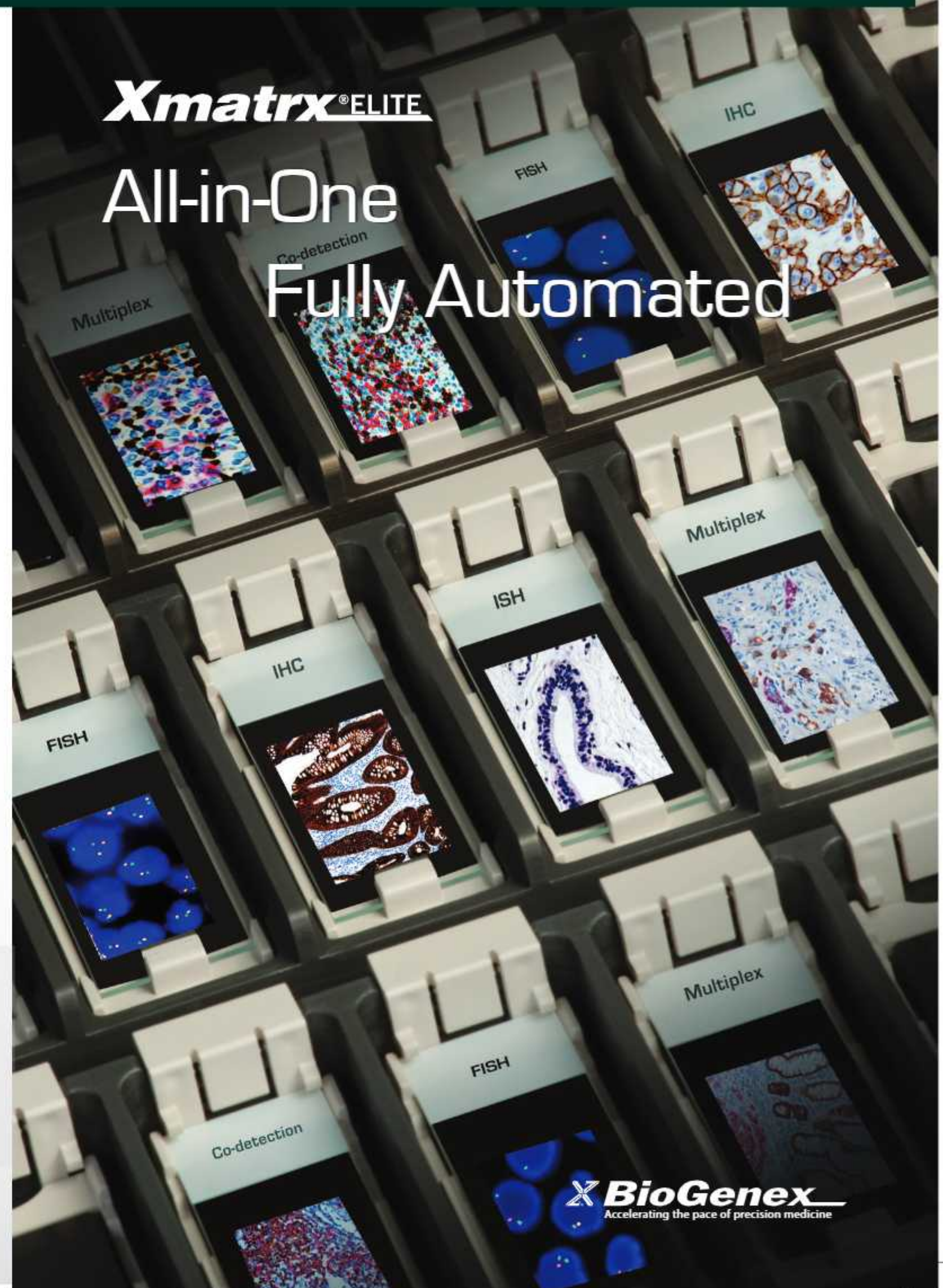


www.biogenex.com



Xmatrix[®]ELITE

All-in-One Fully Automated



All-In-One Fully Automated System

for IHC, ISH, FISH* and Multiplex Stains



Three Simple Steps:



Xmatrix[®]ELITE

The most advanced fully automated system for IHC, ISH
Co-detection, and multiplexing

- All-in-one
IHC, ISH and Multiplex Stains
- *Special dedicated software for FISH

- Adaptable workflow solution for efficiency, enhanced productivity and profitability
- High throughput - up to 100 slides per day, 60 slides in eight hour shift, and 40 slides in a delayed overnight run
- Multi slide processing options: Random access, STAT, and Continuous mode for uninterrupted runs
- Multi-format specimen processing: Frozen, FFPE, Cell Preparations, Smears and FNAs
- More than 600+ optimized, pre-loaded factory protocols and ability to include 200 user-defined protocols
- Simultaneous operation of 40 different protocols in a single run
- LIMS - enabled data tracking and management*
- Accurate reagent usage tracking for inventory management

*Optional Software for Research Use Only [US Only]

*optional

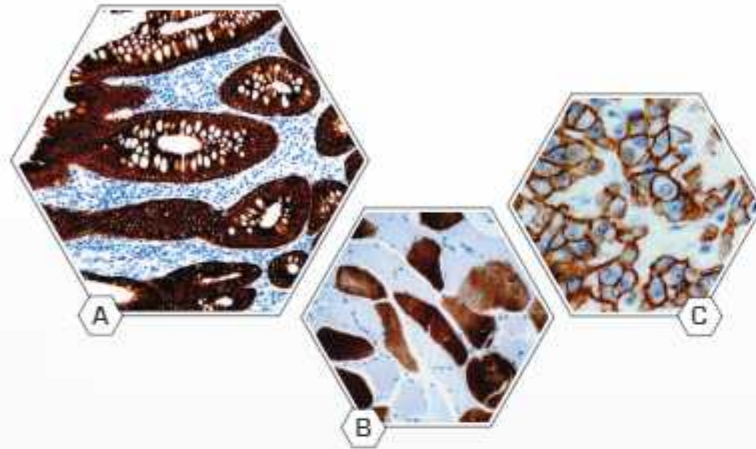
Xmatrix[®]ELITE

BioGenex
Accelerating the pace of precision medicine

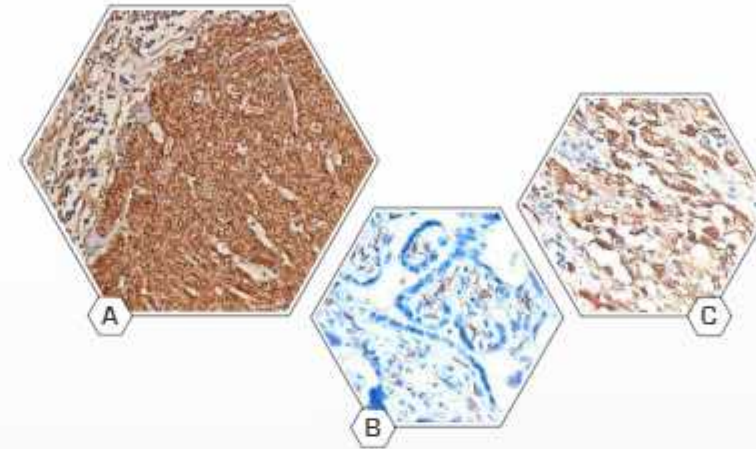
All-In-One Fully Automated System

for IHC, ISH, FISH* and Multiplex Stains

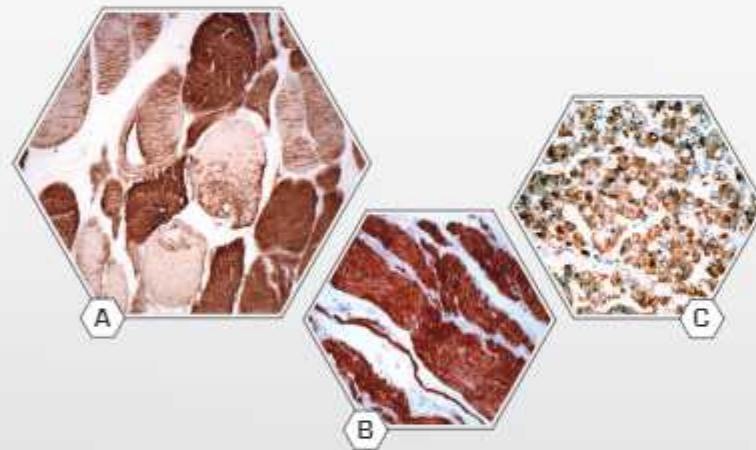
IHC



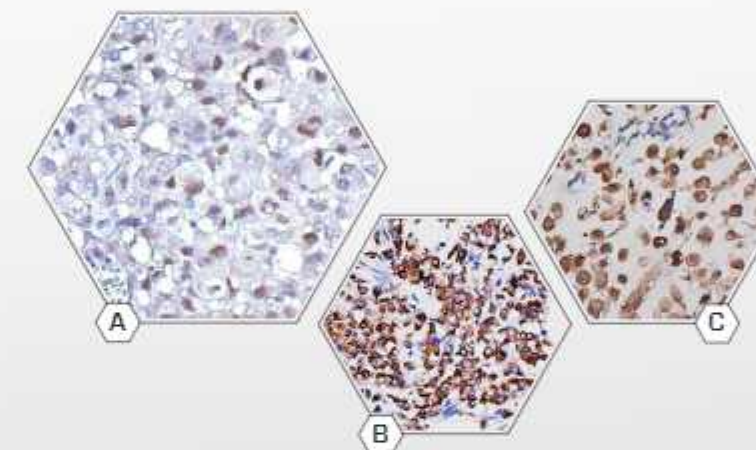
A. Anti-CK18
B. Anti-Myosin
C. Anti-HER2



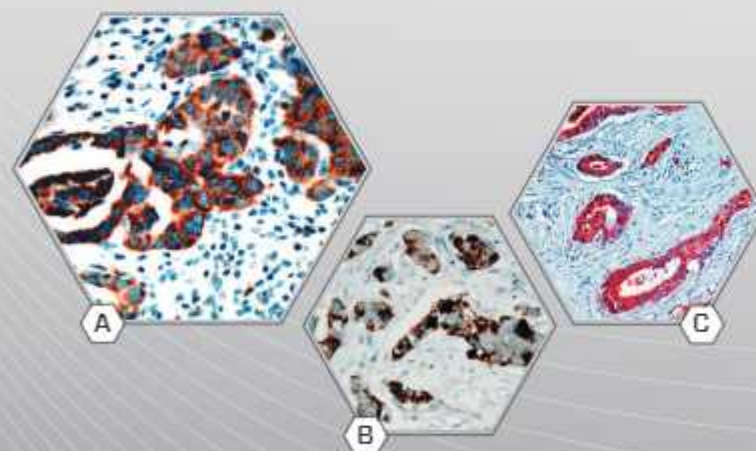
A. CD56
B. Factor XIII A
C. S100B



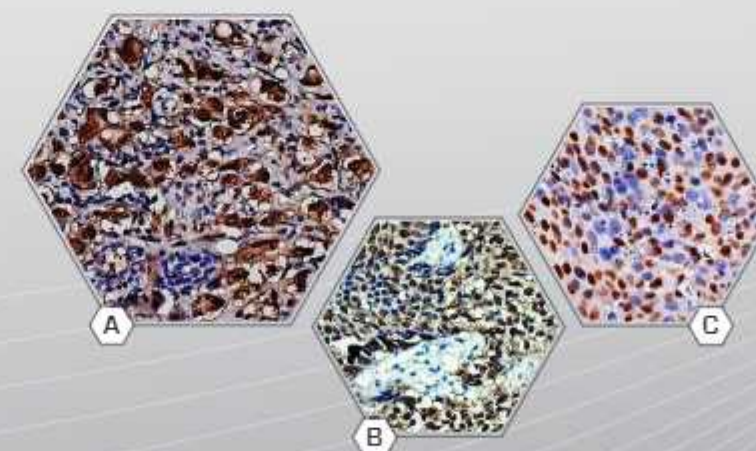
A. Actin, Muscle-Specific
B. Actin, Smooth Muscle
C. ACTH



A. Cyclin D3
B. CK18
C. MYO D1



A. Bcl-x
B. Anti-GCDFP-15
C. Carcinoembryonic Antigen (CEA)

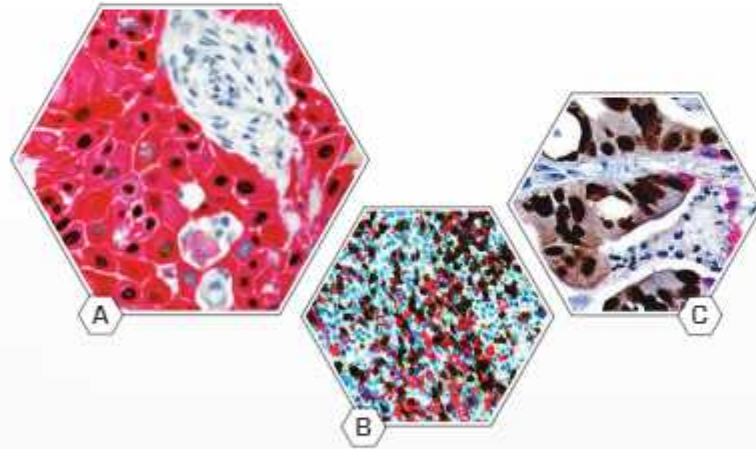


A. IDH1
B. SOX2
C. p21

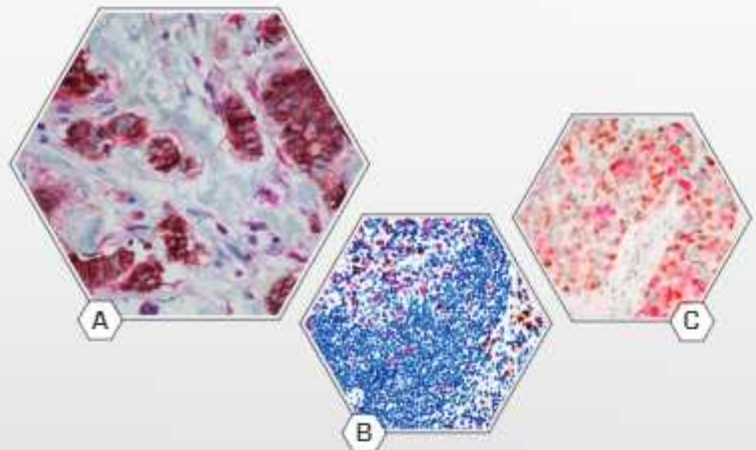
All-In-One Fully Automated System

for IHC, ISH and Multiplex Stains

Multiplex Stains

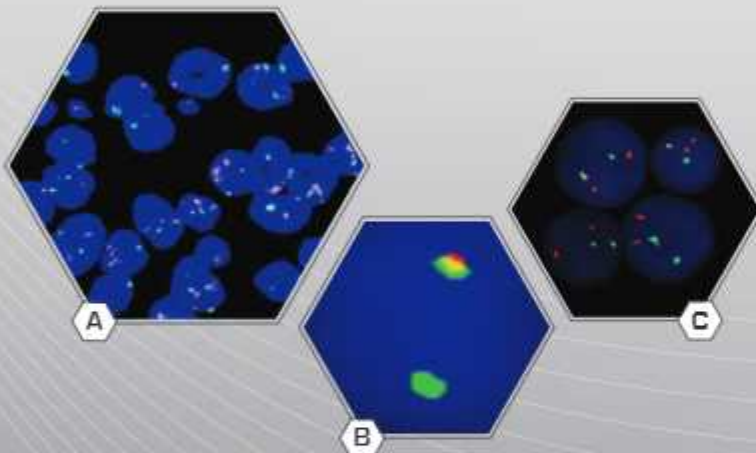


- A. SCC - anti-p63 + anti-CK5
- B. Tonsil - anti-CD3 + anti-CD20
- C. Metastatic Carcinoma in Lung - anti-CDX2 + anti-CK7



- A. E-Cadherin + p120 Catenin
- B. Ki67 + Lambda
- C. CD10+Cyclin D1

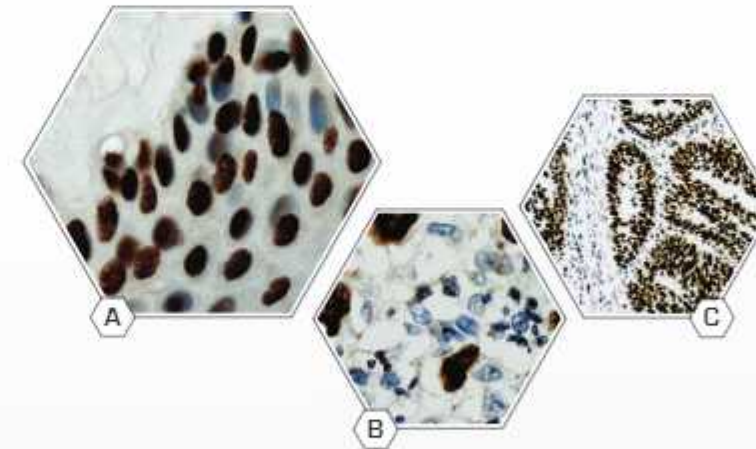
FISH*



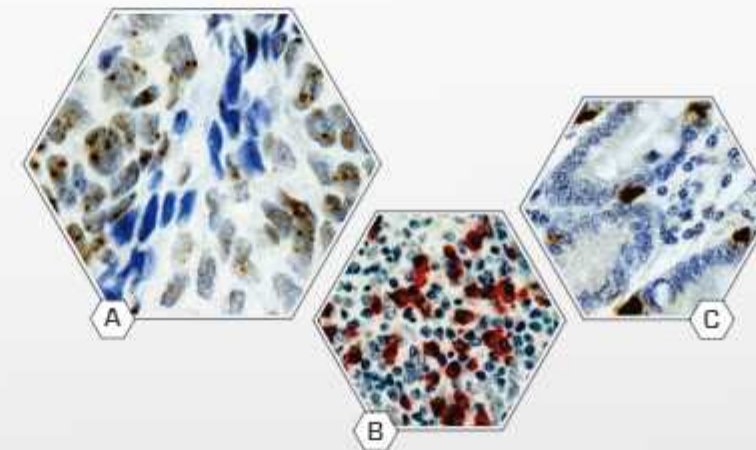
- A. FISH EGFR
- B. FISH Break apart ALK
- C. FISH HER2

*Optional software for research use only (US only)

ISH



- A. Alu II Probe
- B. EBV-encoded RNA Probe
- C. Retinoblastoma (RB) Probe



- A. HPV 16&18
- B. Kappa Probe
- C. Cyclin D1 Probe

System Specifications

Parameters	Xmatrix® Elite	Parameters	Xmatrix® Elite
Automation	Full (baking through coverslip)	Slide temperature range	25-105 °C
Slide capacity	40 slides	Configuration	Free standing
Reagent capacity	49 reagent vials	Protocols	Preloaded >400 protocols
Reagent vial capacity	16 mL and 5 mL	LIMS Integration	Enabled
Bulk reagent carboy & capacity	7 x 4 L	Operating temperature	15-30 °C
Waste container & capacity	2 x 8 L	Operating humidity	15%-55% RH
Slide sensing	Barcode	Operating voltage	115/230 V AC, 60/50 Hz, 900 W
Reagent sensing	Barcode	Dimensions (D/W/H)	29" x 66" x 59"
Reagent dispense volumes	10-800 µL	Weight	400 lb/182 Kg
Reagent dispenser	Pipette tips		