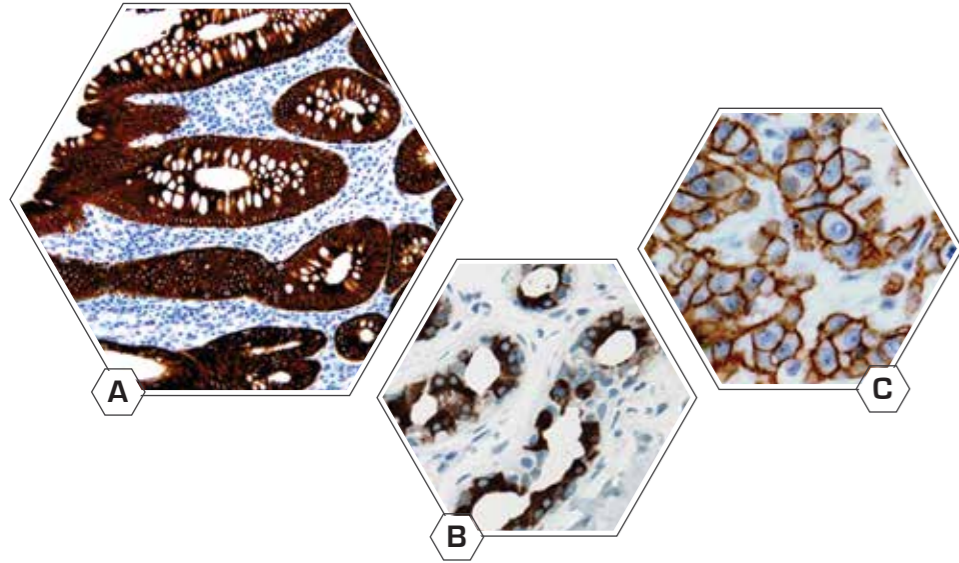


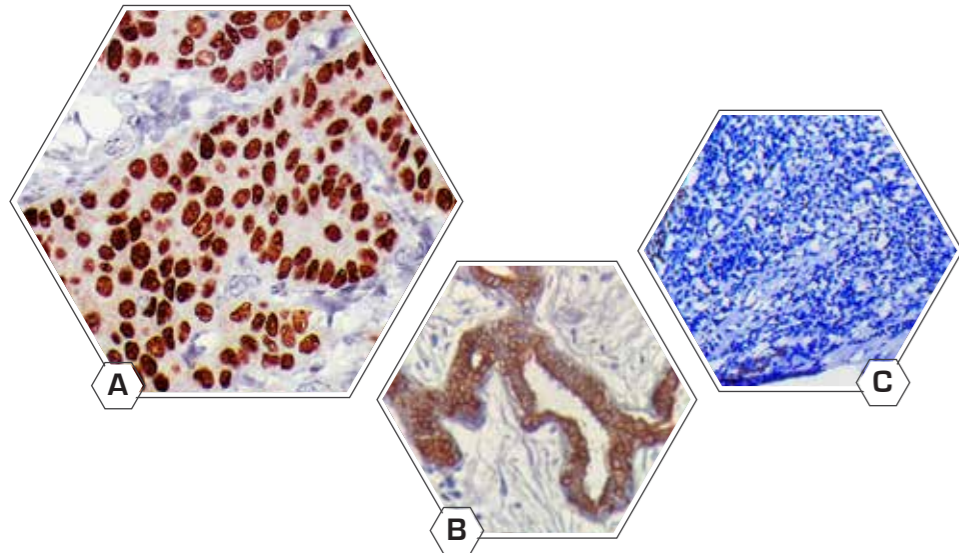
Manage your resources and work flow efficiently

IHC



- A. Anti-CK18
- B. Anti-GCDFP-15
- C. Anti-ErbB-2/Her2

IHC



- A. Anti-Estrogen Receptor
- B. Anti-Cytokeratin
- C. Anti-Ki67

Integrated Workflow Solution

i6000™ Diagnostics
Barcode Enabled IHC Staining System



EZ-Retriever® System
Pre-treatment and Antigen Retrieval System

i500 Plus™
LIS Enabled Barcode Label Printer

- The i6000™ Diagnostics is designed to work seamlessly with the EZ-Retriever® System and EZ-AR Elegance solutions providing eco-friendly de-waxing, rehydration, and Antigen-Retrieval
- Integrated digital-data tracking system with i500 Plus™
- Broad range of optimized ready-to-use reagents

Parameters	i6000™ Diagnostics	Parameters	i6000™ Diagnostics
Automation	Peroxide block to counterstaining	Reagent dispenser	Pipette tips
Slide capacity	60 slides	Configuration	Table mounted
Reagent capacity	60 reagent vials	Protocols	Preloaded >400 protocols
Reagent vial capacity	20 mL	LIMS Integration	Enabled
Bulk reagent carboy & capacity	1 x 10 L, 1 x 10 L	Operating temperature	15-30 °C
Waste container & capacity	1 x 20 L	Operating humidity	15%-55% RH
Slide sensing	Barcode	Operating voltage	115/230 V AC, 60/50 Hz, 300 W
Reagent sensing	Barcode	Dimensions (D/W/H)	24" x 40.5" x 18.5"
Reagent dispense volumes	100-800 µL	Weight	130 lb/59 Kg

Contact Information:

USA: 48810 Kato Road, Suite 200E, Fremont, CA 94538, USA
 India: APIIC SEZ, Adibatla, R.R.Dist. 501510, Telangana, India
 China: Unit 511B, 5F Front Hall, Shanghai Exhibition Center, Shanghai 200041, PRC, China

Customer service - US: customerservice@biogenex.com
 Customer service - India: indiacs@biogenex.com
 Customer service - Global: internationalcs@biogenex.com
 Instrument support: instrument.care@biogenex.com
 Reagent support: reagentsupport@biogenex.com

For US: T: +1-510-824-1400, T: +1-800-421-4149, F: +1-510-824-1490
 For India: T: +91-6309448856
 For China: T: +86-21-2220-6680, F: +86-21-2220-6679
 For outside US, India, and China: T: +91-7702301043



www.biogenex.com

i6000™ Diagnostics
Integrated high-throughput workflow solution



Clean, crisp, and intense stains
60 slides in 3 hours

About i6000™ Diagnostics

BioGenex i6000™ Diagnostics is a multipurpose fully integrated staining system that is designed to work seamlessly with LIS enabled i500™ Plus for barcode printing and EZ-Retriever® with EZ-AR solutions for de-waxing, rehydration and antigen retrieval.

EZ-Retriever® System

The EZ-Retriever® System + EZ-AR™ Elegance Buffers is an All-in-One and All-at-Once solution for one-step dewaxing, rehydration, and antigen retrieval. The EZ-Retriever® System is a microwave based system that streamlines the entire antigen retrieval process.

- Microwave based technology – fast uniform heating and cooling for consistent results
- High Throughput - 96 Slides in 30 minutes
- Four different Antigen Retrieval solutions can be used simultaneously
- Programmable time and temperature controls
- Wide range of heating capabilities between 40 °C – 107 °C
- Optimized factory protocols for consistent results
- Built-in temperature probe and LCD display
- Complies with CLSI guidelines
- Tissue morphology is not compromised



EZ-AR™ Elegance solution

- Dewaxing, rehydration, and antigen retrieval in a single step
- Superheating retrieval solutions – no boils and spill-overs
- EZ-AR™ Elegance solutions are stable up to 107 °C with little to no evaporation
- EZ-AR™ Elegance solutions are reusable up to 4 times
- EZ-AR™ 2 Elegance retrieves almost all antigens for intense clean super stains
- EZ-AR™ Elegance solutions are non-hazardous, non-inflammatory, and odourless



i500™ Plus

BioGenex i500™ Plus is a LIS-enabled barcode label printer designed to print chemical resistant labels for glass slides. This simple device eliminates manual writing, allows users to print information (e.g. accession number, tissue type) efficiently, and retrieves data for quick printing.

- Chemical resistant labels for glass slides
- User-friendly software
- Synchronizes factory staining protocols stored on the system
- Print speed: 6 labels/second



Key features and benefits of i6000™ Diagnostics

Adaptable, Efficient, Productive, and Profitable

- Dispense reagents as low as 100 µL/slide
- Predictable cost structure
- High capacity – 60 slides and 53 antibodies per run
- More productivity per square foot of lab space
 - High throughput – up to 200 slides in an 8 hrs. shift, 60 slides in 3 hours
 - Start delayed run and return to stained slides next morning

Flexible System

- Multiple slide processing options - Random, Continuous, and STAT
- Multi format specimen processing - FFPE, frozen, cell preparations, fine needle aspirates, and smears

Easy to Use

- Advance XYZ robotics with slide carriers and reagent racks allow quick set-up
- Top loading system ensures easy handling and management of slides and reagents
- Color-coded GUI with real-time assay parameter display for all slides
- Short learning curve allows cross-training and rotation of personnel
- Real-time audio and visual alerts

Reproducible and Reliable Results

- Standardized staining process
- Over 600+ optimized protocols with ready-to-use reagents in barcoded vials
- Liquid level sensor ensures accurate reagent handling
- Disposable pipettes eliminate cross-contamination

Reports and LIS connectivity

- Customized or standard reports for inventory management and regulatory compliance & submission
- LIS connectivity*
- Step-by-step protocol log for every slide
- Run parameters, reagent expiration dates, and specimen used
- Reagent inventory management

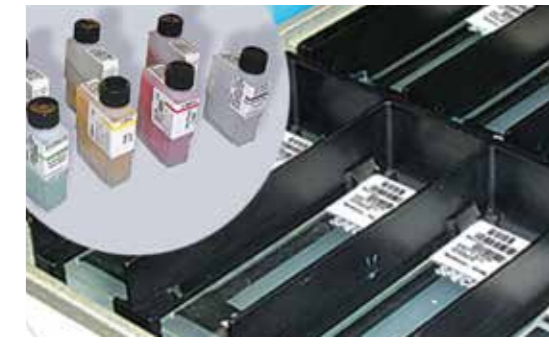
* Optional

i6000™ Diagnostics system



Removable Reagent Racks (2x30 vials)

- Offers quick and convenient storage of reagent vials
- Enables multiple staining protocols in a single run



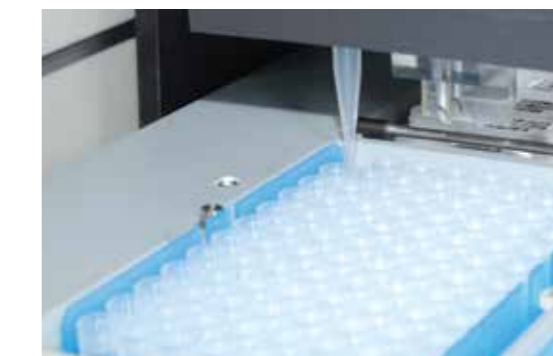
Bar-coded Slides and Reagent Vials

- Requires minimal hands-on time
- Reduces data entry errors



Disposable Pipette Tips

- Eliminates cross-contamination of reagents



Removable Slide Racks with Splash Guard (5x12 Slides)

- Provides contamination free staining

