

## Ordering Information

### Super Sensitive™ Polymer-HRP ISH Detection System

Product Name	Pack Size	Probe type	Cat. No.	Format
Super Sensitive™ One-Step Polymer-HRP ISH Detection System	50 Slides	Fluorescein-Labeled	DF400-50K	Manual
XISH™ One-Step Polymer HRP ISH Detection System	100 Slides	Fluorescein-Labeled	DF400-YAD	Automation

### Super Sensitive™ Double Staining Polymer Detection System

Product Name	Pack Size	Cat. No	Format
Super Sensitive™ Double Staining Polymer Detection Kit I / DAB & Permanent Fast Red	60 slides	QS200-60KE	Manual
XViz™ Double Staining Polymer Detection Kit I / DAB & Permanent Fast Red A	200 slides	QS200-YADE	Automation
Super Sensitive™ Double Stain Polymer Detection Kit I/Large Volume	500 slides	QS210-YIKE	Manual
Super Sensitive™ Double Staining Polymer Detection Kit II / DAB & Permanent Fast Red	60 slides	QS400-60KE	Manual
XViz™ Double Staining Polymer Detection Kit II / DAB & Permanent Fast Red	200 slides	QS400-YADE	Automation
Super Sensitive™ Double Staining Polymer Detection Kit II / DAB & Permanent Fast Red / Large Volume	500 slides	QS410-YIKE	Manual

### ISH Probes

Product Name	Pack Size	Cat. No.	Format
Alu II DNA	25 slides	PR026-100	Manual
		PR026-YAD	Automation
Epstein Barr Virus Early RNA (EBER)	25 slides	PR205-100	Manual
		PR205-YAD	Automation
Kappa Probe	25 slides	PR214-100	Manual
		PR214-YAD	Automation
Lambda Probe	25 slides	PR215-100	Manual
		PR215-YAD	Automation
HPV 16 & 18 Probe	25 slides	PR250-100	Manual
		PR250-YAD	Automation
HPV 14 High Risk Probe Cocktail	25 slides	PR251-100	Manual
		PR251-YAD	Automation

### New Cocktails

Product Name	Cat. No. Manual	Cat. No. i6000	Cat. No. Xmatrx
CD10+Cyclin D1*	AC561-5M	AC561-10M	AC561-YCD
CD3+CD20*	AC559-5M	AC559-10M	AC559-YCD
CD4+CD8	AC595-5M	AC595-10M	AC595-YCD
CDX-2+CK7	AC596-5M	AC596-10M	AC596-YCD
CD5+CD23*	AC560-5M	AC560-10M	AC560-YCD
Ki67+Lambda	AC562-5M	AC562-10M	AC562-YCD
P16+Ki67	AC601-5M	AC601-10M	AC601-YCD
TTF1+CK5/6*	AC563-5M	AC563-10M	AC563-YCD
TTF1+GCDFP-15	AC604-5M	AC604-10M	AC604-YCD
CDX-2+CK20+CK7*	AC597-5M	AC597-10M	AC597-YCD
TTF-1+CK20+CK7*	AC605-5M	AC605-10M	AC605-YCD
p63+CK5	AC602-5M	AC602-10M	AC602-YCD
PIN4 (p63+CKHMW+p504S)	AM448-5M	AM448-10M	AX448-YCD

\* To be released soon

### Contact Information:

USA: 49026 Milmont Drive, Fremont, CA 94538, USA

India: APIIC SEZ, Adibatla, R.R.Dist. 501510, Telangana, India

China: Unit 511B, 5F Front Hall, Shanghai Exhibition Center, Shanghai 200041, PRC, China

Customer service - US: customerservice@biogenex.com

Customer service - India: indiacs@biogenex.com

Customer service - Global: internationalcs@biogenex.com

Instrument support: instrument.care@biogenex.com

Reagent support: reagentsupport@biogenex.com

For US

T: +1-800-421-4149

F: +1-510-824-1490

For India

T: +91-9100032862

T: +91-6309448856

For China

T: +86-21-2220-6680

F: +86-21-2220-6679

For outside US, India, and China

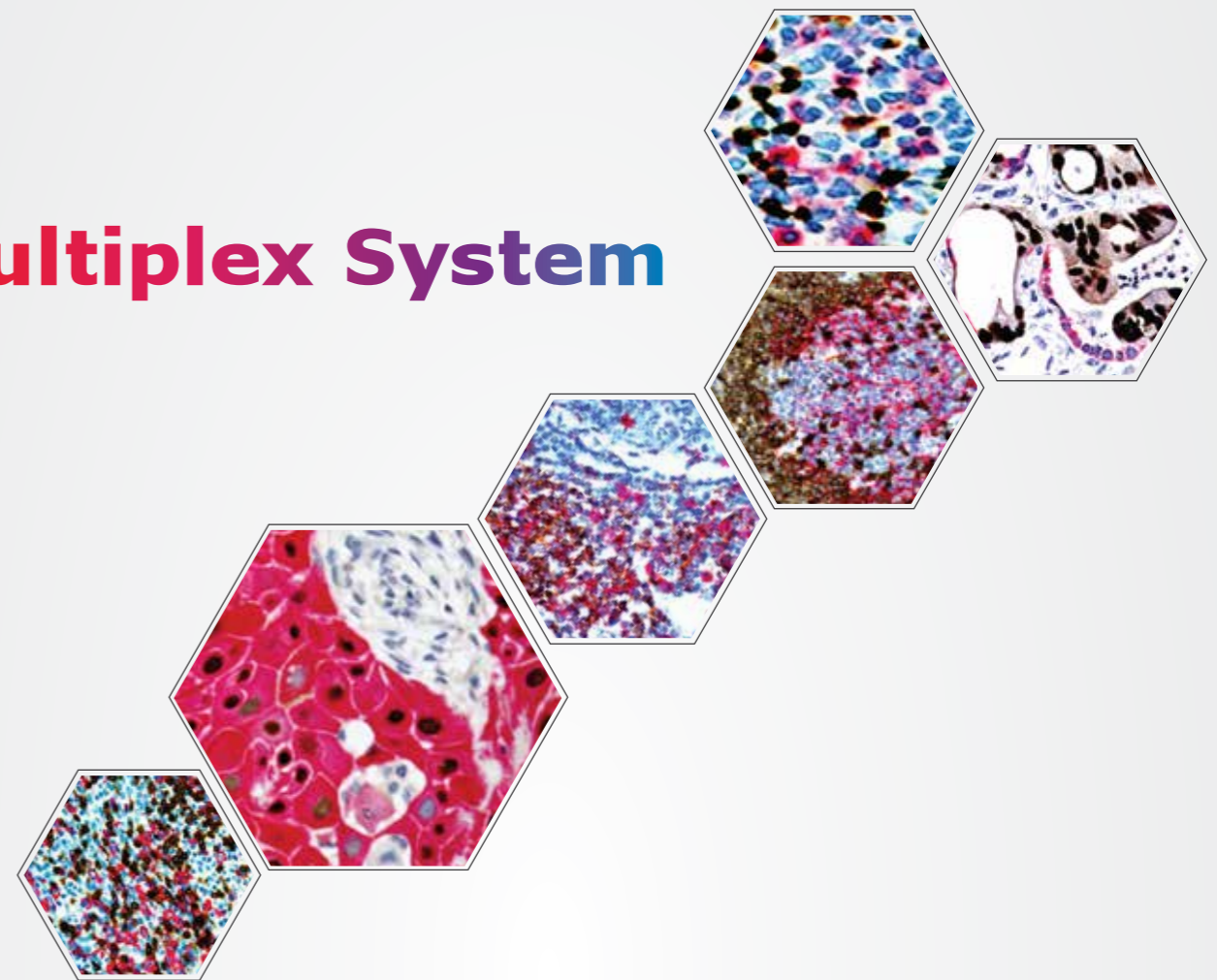
T: +91-7702301043



www.biogenex.com

**BioGenex**  
Accelerating the pace of precision medicine

## Multiplex System



Visualize single copy gene  
Stain simultaneously  
IHC & ISH  
Multiple IHC

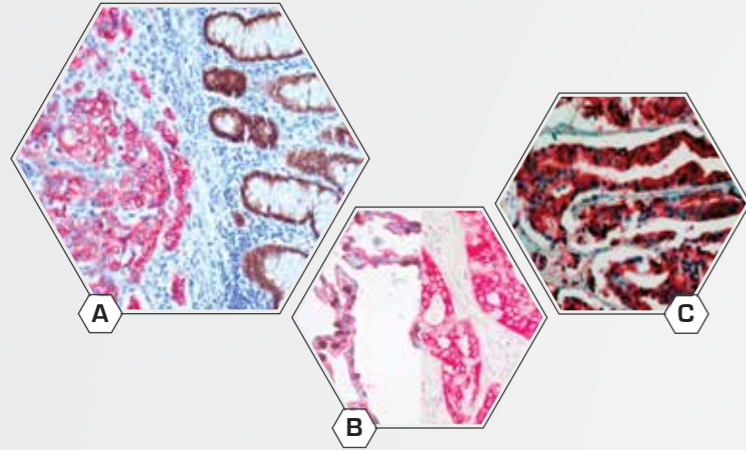
**Xmatrx® ELITE**  
Microtome to Microscope

**BioGenex**  
Accelerating the pace of precision medicine

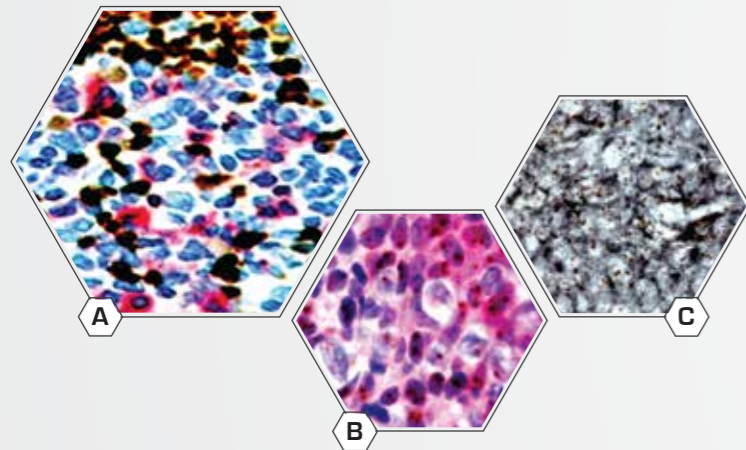
© 2019 BioGenex Laboratories, Inc. All Rights Reserved Doc. No. 907-4092.0 Rev. E

## Multiplex System – Reveal IHC and ISH

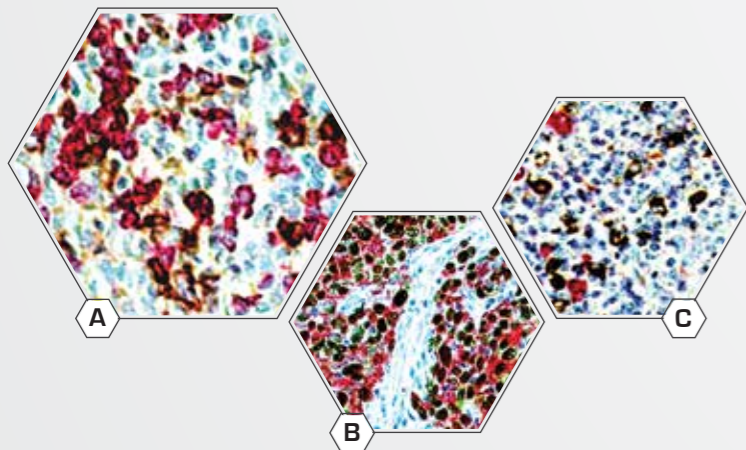
- Visualize Multiple IHC and ISH markers simultaneously
- View both protein and nucleic acid stains in the spatial context
- Automation enabled with convenient ready-to-use reagents



A. anti-CDX-2 + anti-CK20 + anti-CK7  
 B. anti-TTF-1 + anti-CK20 + anti-CK7  
 C. PIN4 (p63+CK HMW+p504S)



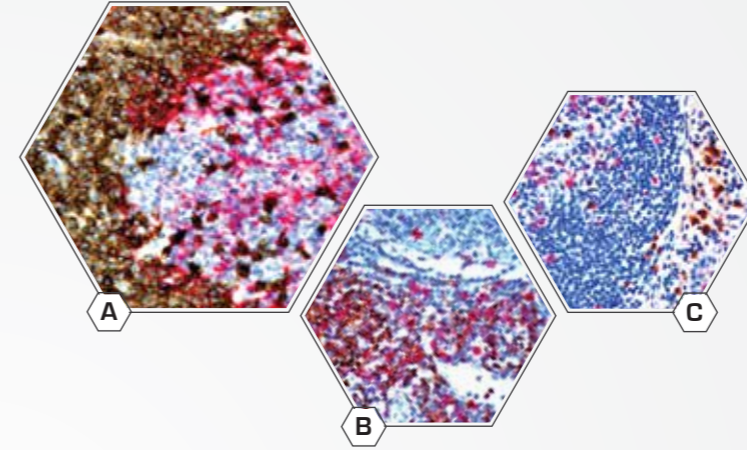
A. Cyclin D1 mRNA + anti-CD10  
 B. HPV 16 & 18 viral DNA + anti-p16  
 C. HPV 16 & 18 viral DNA + miR146a



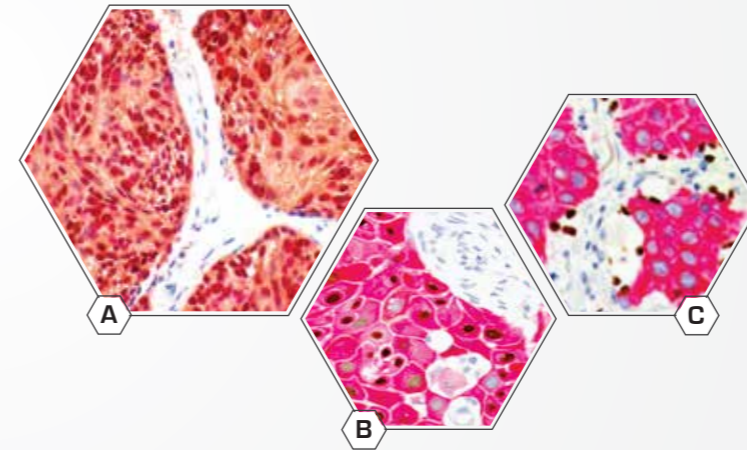
A. Kappa mRNA + anti-Lambda  
 B. EBER mRNA + anti-CK  
 C. Lambda mRNA + anti-Kappa

## Multiplex System – Reveal multiple IHC stains

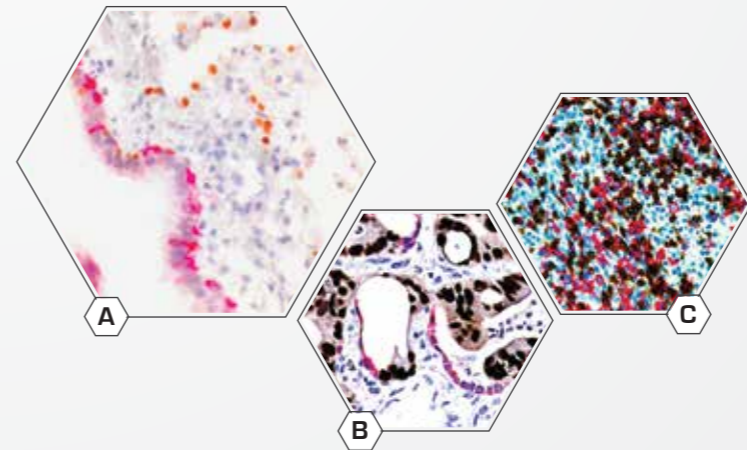
- Enhance productivity, minimize reagent & labor cost
- Adapted to fully automated high-throughput Xmatrix system
- Reduce turnaround-time vis-à-vis traditional sequential staining



A. anti-CD5 + anti-CD23  
 B. anti-CD4 + anti-CD8  
 C. anti-Ki67 + anti-Lambda



A. anti-p16 + anti-Ki67  
 B. anti-p63 + anti-CK5  
 C. anti-TTF1 + anti-GCDFP 15



A. anti-TTF1 + anti-CK5/6  
 B. anti-CDX2 + anti-CK7  
 C. Tonsil - anti-CD3 + anti-CD20